

VISUAL ARTS – 2020

Q.1 Who illustrated the Tagore's book "Sahaj Path"?

- (1) Mukul Chandra Dey
- (2) Biswarup Bose
- (3) Ramen Chakraborty
- (4) Nandlal Bose

Q.2 Which types of plate is used in Dry - point?

- (A) Copper
- (B) Zinc
- (C) Cardboard
- (D) Acrylic

Choose the correct answer from the option given below:

- (1) (A), (B) and (C) only
- (2) (A), (C) and (D) only
- (3) (A), (B) and (D) only
- (4) (B), (C) and (D) only

Q.3 Who painted the portrait of "Bani Thani" mistress of Raja Savant Singh?

- (1) Nihal Chand
- (2) Bisandas
- (3) Nainsukh
- (4) Fattu

Q.4 Match List I With List II

- | | |
|---------------------|---------------|
| (A) Hindola Mahal | (i) Delhi |
| (B) Khirki Masjid | (II) Srinagar |
| (C) Ahamad ud Daula | (III) Mandu |
| (D) Shah Hamdan | (IV) Agra |

Choose the correct answer from the options given below:

- (1) (A)-(II), (B)-(I), (C) (IV), (D) (III)
- (2) (A) (I), (B) (II), (C)-(III), (D) - (IV)
- (3) (A) (IV), (B) (II), (C) (I), (D) - (III)
- (4) (A)-(III), (B)-(I), (C)-(IV), (D) (II)

Q.5 "Hansa Damayanthi" is famous

- (1) Oleograph of Raja Ravi Varma
- (2) Serigraph of Jagmohan Chopra
- (3) Wood engraving of Haren Das
- (4) Intaglio of Jyoti Bhatt

Q.6 Given below are two statements:

Statement (I) Auguste Rodin admired Michelangelo's unfinished sculptures

Statement (II): He deliberately left many of his marble carvings unfinished.

In the light of the above statements, choose the correct answer from the options given below:

- (1) Both Statement (I) and Statement (II) are true
- (2) Both Statement (I) and Statement (II) are false
- (3) Statement (I) is correct but Statement (II) is false
- (4) Statement (I) is incorrect but Statement (II) is true

Q.7 Herman Zafis is one of the most illustrious designer of the 20th Century and had specialization in the area of

- (1) Poster
- (2) Typography
- (3) Subway Advertising
- (4) Digital Expressionism

Q.8 Select the correct chronological sequence of artists

- (A) Duane Hanson
- (B) Michelangelo
- (C) Donatello
- (D) David Smith

Choose the correct answer from the option given below:

- (1) (A), (B), (D), (C)
- (2) (B), (D), (A), (C)
- (3) (D), (A), (C), (B)
- (4) (C), (B), (D), (A)

Q.9 Leather roller is used for

- (1) Intaglio printing
- (2) Lithography printing
- (3) Relief printing
- (4) Colography printing

Q.10 Match List I With List II?

- | | |
|-----------------|------------------------------|
| (A) Meghdoot | (I) Manjit Bawa |
| (B) Gowardhan | (II) Ramgopal
Vijayvargia |
| (C) Rag Deepak | (III) K.V. Haridasan |
| (D) Brahamsutra | (IV) M.F. Hussain |

Choose the correct answer from the options given below:

- (1) (A)-(I). (B)-(II). (C)-(III). (D) (IV)
- (2) (A) (IV). (B)-(III). (C)-(II). (D) (I)
- (3) (A)-(II). (B)-(I). (C)-(IV). (D)-(III)
- (4) (A)-(III). (B)-(II). (C)-(I). (D) - (IV)

Q.11 The painting titled, 'Sati' was created by

- | | |
|------------------|-------------------------------|
| (1) Ramkumar | (2) Rameshwar Broota |
| (3) Nandlal Bose | (4) Binod Bihari
Mukharjee |

Q.12 What is name of the temple constructed on apsidal plan at Aihole?

- | | |
|----------------------|-------------------|
| (1) Lad Khan | (2) Durga Temple |
| (3) Kontigudi Temple | (4) Meguti Temple |

Q.13 In which Mughal monument the famous Musamman Burj is located?

- (1) Red fort. Agra
- (2) Red fort, Delhi
- (3) Shahi Fort, Lahore
- (4) Fatehpur Sikari, Agra

Q.14 Jacques Lipchitz was a

- (1) Russian Sculptor
- (2) French Sculptor
- (3) Spanish Sculptor
- (4) American Sculptor

Q.15 Shikar in Dravidian Temples are stylistically bears following elements?

- (A) Kalash
- (B) Stupika
- (C) Chaitya motif
- (D) Karn Shikhar

Choose the correct answer from the option given below:

- (1) (A) and (B) only
- (2) (B) and (C) only
- (3) (C) and (D) only
- (4) (A) and (D) only

Q.16 A documentary film named "Inner Eye" by film maker Satyajit Roy made on :

- (1) K.G. Subramanyam
- (2) Binode Behari Mukherjee
- (3) Nandlal Bose
- (4) Ramkinkar Baij

Q.17 Match List I with List II

- | | |
|------------------------------------|------------------|
| (A) The taste of India | (I) Pepsi |
| (B) Reclaim your life | (II) Air Deccan |
| (C) Yehi hain right
choice baby | (III) Amul |
| (D) Simplify | (IV) Tata Safari |

Choose the correct answer from the options given below:

- (1) (A) (IV), (B)-(III), (C)-(II), (D) (I)
- (2) (A)-(III). (B) (IV). (C) (I). (D) (II)
- (3) (A) (II). (B)-(III). (C)-(IV). (D) (I)
- (4) (A) (I). (B) (II). (C) (III). (D) (IV)

Q.18 Match List I With List II

- | | |
|-------------------------------|-----------------|
| (A) The Night watch | (1) Raphael |
| (B) The Calling of St. Mathew | (II) Caravaggio |
| (C) The School of Athens | (III) Giotto |
| (D) The Flight in to Egypt | (IV) Rembrandt. |

Choose the correct answer from the options given below:

- (1) (A)-(I), (B)-(II). (C)-(III). (D)-(IV)
- (2) (A)-(IV). (B)-(II). (C)-(I). (D)-(III)
- (3) (A)-(III). (B)-(IV). (C) -(II). (D)-(I)
- (4) (A) (IV). (B)-(III). (C)-(II). (D) -(I)

Q.19 According to Brahmanical Iconography the attribute mirror is held by the Goddess.

- (1) Sarasrati (2) Indrani
(3) Lakshmi (4) Sheetala

Q.20 Select the chronological sequence of Printmaking

- (A) Wood engraving
(B) Metal engraving
(C) Wood Block printing
(D) Screen printing

Choose the correct answer from the option given below:

- (1) (B). (A). (C), (D)
(2) (C). (A), (B). (D)
(3) (A). (B). (D). (C)
(4) (C). (D), (B). (A)

Q.21 Choose the artists who were associated with 'Group 1890' from the following:

- (A) Ambadas
(B) Kanwal Krishna
(C) Raghav Kaneria
(D) Jeram Patel

Choose the correct answer from the option given below:

- (1) (A) and (B) only
(2) (A). (B) and (D) only
(3) (A). (C) and (D) only
(4) (A) and (D) only

Q.22 Match List I With List II?

- | | |
|-------------------|------------------------|
| (A) Dead or Alive | (1) Georges Rouault |
| (B) Blue Circus | (II) Marc Chagal |
| (C) Clown | (III) Frans Hals |
| (D) Gipsy Girl | (IV) Robert Motherwell |

Choose the correct answer from the options given below:

- (1) (A)-(II), (B) (III). (C)-(IV). (D) (I)
(2) (A)-(I). (B)-(II). (C)-(III). (D) (IV)
(3) (A)-(IV). (B)-(II). (C)-(I). (D) - (III)

- (4) (A)-(IV). (B)-(II). (C)-(III). (D) (I)

Q.23 Relief sculpture of Vishnu - Anantshayi is enshrined in a niche on outer wall of a Gupta temple. What is the name of the temple?

- (1) Vishnu Temple, Airan
(2) Udaigiri, Vidisha
(3) Dasavatar Temple, Deogarh
(4) Sanchi Cave no. 17

Q.24 Identify the print makers mentioned below

- (A) Paul Lingren
(B) Albrecht Durer
(C) Vladimir Tatlin
(D) Marino Marini

Choose the correct answer from the option given below:

- (1) (B) and (C) only
(2) (A) and (D) only
(3) (A) and (B) only
(4) (A). (B) and (D) only

Q.25 Match the design movements with their respective pioneers

- | | |
|----------------------------------|-------------------------|
| (A) The Arts and Crafts Movement | (i) William Morris |
| (B) Art Nouveau Movement | (II) Arthur H.Mackmurdo |
| (C) Bauhaus Movement | (III) Walter Gropius |
| (D) Japonisme | (IV) M.C. Perry |

Choose the correct answer from the options given below:

1. (A) (IV). (B)-(1). (C)-(II). (D) - (III)
2. (A)-(1). (B)-(II). (C)-(III). (D)-(IV))
3. (A)-(II). (B)-(III). (C) (IV). (D) (I)
4. (A)-(III). (B) (IV). (C)-(I). (D) (II)

Q.26 Identify the artists who were associated with Abstract art movement.

- (A) Kandinsky
(B) Marinomarini

- (C) Malevich
(D) Piet Mondrain

Choose the correct answer from the option given below:

- (1) (A). (B) and (C) only
(2) (B). (C) and (D) only
(3) (A), (C) and (D) only
(4) (A), (B) and (D) only

Q.27 Under the Kushana patronage main schools of sculptures flourished at

- (A) Gandhara (Greco-Indian)
(B) Mathura (Indeginous)
(C) Amravati
(D) Nagarjunikonda

Choose the correct answer from the option given below:

- (1) (C) and (D) only
(2) (A) and (B) only
(3) (A) and (D) only
(4) (B) and (C) only

Q.28 Select the correct sequence of steps in lithography

- (A) Application of Gum
(B) Surface cleaning
(C) Grinding
(D) Drawing

Choose the correct answer from the option given below:

- (1) (C), (A), (D), (B)
(2) (A), (B), (D), (C)
(3) (C), (B), (D), (A)
(4) (D), (C), (A), (B)

Q.29 Who was associated with Indian printmaker Guild?

- (A) Kavita Nayar
(B) Sushant Guha
(C) Dattatraya Apte
(D) Jagmohan Chopra

Choose the correct answer from the option given below:

- (1) (A), (B) and (C) only

- (2) (A), (B) and (D) only
(3) (B), (C) and (D) only
(4) (A), (C) and (D) only

Q.30 The Raja Ravi Varma started lithographic press in Ghatkopar, Bombay.

- (1) 1864 (2) 1894
(3) 1884 (4) 1874

Q.31 Choose the artists who were associated with J.J School of Art, Bombay?

- (A) J.Swaminathan
(B) M.V. Dhurandhar
(C) S.L. Haldankar
(D) Ravi Shankar Rawal

Choose the correct answer from the option given below:

- (1) (A) and (B) only
(2) (B) and (C) only
(3) (B), (C) and (D) only
(4) (A), (C) and (D) only

Q.32 Johan J.Winkelmann is associated with

- (1) Romanticism (2) Realism
(3) Impressionism (4) Neoclassicism

Q.33 Match List I with List II

- | | |
|----------------------------|----------------------|
| (A) Albrecht Durer | (i) Dry-point |
| (B) Rembrandt | (II) Viscosity |
| (C) Hokusai | (III) Wood engraving |
| (D) Stanley William Hayter | (IV) Woodblock print |

Choose the correct answer from the options given below:

- (1) (A)-(II), (B)-(IV), (C)-(III), (D) (I)
(2) (A)-(I), (B)-(II), (C) (IV), (D)-(III)
(3) (A)-(III), (B) (I), (C)-(IV), (D) (II)
(4) (A)-(IV), (B)-(III), (C)-(I), (D) (II)

Q.34 A full-colour magazine, for producing a range of tones, as found in Halftone uses: -

- (1) 150 dpi (2) 300 dpi
(3) 60 dpi (4) 600 dpi

Q.35 The main force of attraction in graphic design is generated by the combination of:

- (1) Words only
(2) Image(s) only
(3) Word and Image
(4) Word, pictures and other elements like logo and Symbols

Q.36 Who painted the famous Baroque style painting. "Rape of Europa"?

- (1) Peter Paul Rubens (2) Rembrandt
(3) Caravaggio (4) Velasquez

Q.37 Identify correct chronological order of the following sculpture

- (A) Ashoka at Kalinga
(B) Egg Bride
(C) Global Agony
(D) Vanshri

Choose the correct answer from the option given below:

- (1) (A). (B). (C). (D)
(2) (C). (D). (B). (A)
(3) (B). (A). (D). (C)
(4) (D). (A). (C). (B)

Q.38 Which substance is applied for cleaning aluminium during melting?

- (1) Sodium Chloride (2) Borax
(3) Sugar
(4) Ammonium Chloride

Q.39 'And then what Happened' is a sculpture by

- (1) Alex Methew (2) Rajat Ghosh
(3) N. Pushpamala (4) N.N. Rimzan

Q.40 Dialectics theory given by which Aesthetician.

- (1) Leo Tolstoy (2) Hegel
(3) Aristotle (4) Corce

Q.41 "Wound" series are:

- (1) Etching print (2) Pulp print
(3) Serigraph print (4) Wood Print

Q.42 Which one is a fat face Roman type?

- (1) Oswald Cooper (2) Austin Cooper
(3) Cooper Muriel (4) Cooper Black

Q.43 Choose correct chronology of temples of Khajuraho

- (A) Kandariya Mahadeva
(B) Adinath
(C) Lakshman
(D) Chausanth Yogini

Choose the correct answer from the option given below:

- (1) (A). (B). (C). (D)
(2) (B). (A). (D). (C)
(3) (D). (A). (C). (B)
(4) (D). (C). (B). (A)

Q.44 Match List I With List II?

- (A) Dhan Raj Bhagat (I) Cloud Gate
(B) K.G. Subramanyam (II) Harvester
(C) Anish Kapoor (III) King of the Dark Chamber
(D) Ramkinkar Baij (IV) Spirit of Work

Choose the correct answer from the options given below:

- (1) (A)-(III). (B)-(I). (C)-(II). (D)-(IV)
(2) (A) (1). (B)-(II). (C) (IV). (D) (III)
(3) (A) (II). (B) (IV). (C)-(III). (D)-(I)
(4) (A)-(IV). (B)-(III). (C)-(1), (D)-(II)

Q.45 Joseph Beuys' works involve

- (A) Installation
(B) Environment
(C) Happenings

(D) Assemblage

Choose the correct answer from the option given below:

- (1) (A) and (B) only
- (2) (B) and (C) only
- (3) (C) and (D) only
- (4) (B) and (D) only

Q.46 Find the Name of persons known as painter as well as printmaker

- (A) Dhanraj Bhagat
- (B) K.G. Subramanyam
- (C) Somnath Hore
- (D) B.C. Sanyal

Choose the correct answer from the option given below:

- (1) (A) and (B) only
- (2) (B) and (C) only
- (3) (C) and (D) only
- (4) (D) and (A) only

Q.47 Illustrated manuscript Tuti Nama' consists of 52 stories and 250 immature paintings executed in Mughal court studio. To whose reign it dates?

- (1) Babar (2) Humayun
- (3) Akbar (4) Jehangir

Q.48 The signature style of S.Nandagopal's sculptures is

- (A) Inspired from Greek Art
- (B) A blend of folk and post-modern Art
- (C) Inspired from tribal sculptures
- (D) A blend of traditional and contemporary Art

Choose the correct answer from the option given below:

- (1) (A) and (C) only
- (2) (B) and (C) only
- (3) (C) and (D) only
- (4) (B) and (D) only

Q.49 Viscosity printing is done by using:
(A) Plastic Surface

(B) Rollers of different hardness

(C) Thinners of colour

(D) Types of oils

Choose the correct answer from the option given below:

- (1) (A). (B) and (D) only
- (2) (B). (C) and (D) only
- (3) (A) and (B) only
- (4) (C) and (D) only

Q.50 Name the western scholar who developed the idea that Art Expresses Emotions, not Ideas.

- (1) Clive Bell (2) Hegel
- (3) Penotsky (4) Croce

Q.51 The term Leitmotif is associated with which of the following design trends (Schools)

- (1) Expressionism
- (2) The Chicago School
- (3) Mackintosh and the Glasgow School
- (4) Art Nouveau

Q.52 Baroque art movement of Europe is known for depicting:

- (A) Intense Emotions
- (B) Simplistic forms
- (C) Dynamic Motion
- (D) Contrast of light and shade

Choose the correct answer from the option given below:

- (1) (A). (B) and (C) only
- (2) (B). (C) and (D) only
- (3) (A). (C) and (D) only
- (4) (A). (B) and (D) only

Q.53 Match List I With List II?

- | | |
|----------------------|---|
| (A) Eduardo Paolozzi | (I) The White Bride |
| (B) Victor Pasmore | (II) Figure with raised arm |
| (C) Andrea Cascella | (III) Japanese war God |
| (D) Georg Baselitz | (IV) Abstract in white, ochre and black |

Choose the correct answer from the options given below:

- (1) (A) (IV). (B) (I). (C)-(II). (D) - (III)
- (2) (A)-(III), (B)-(IV). (C)-(I), (D)-(II)
- (3) (A)-(I). (B)-(II). (C)-(III). (D)-(IV)
- (4) (A) (II). (B) (III). (C) (IV). (D) (D)

Q.54 Who was often called the father of English Water colour

- (1) William Blake
- (2) John Constable
- (3) Lard Curzon
- (4) Paul Sandby

Q.55 During early renaissance who initially experimented with perspective in painting.

- (1) Paolo Uccello
- (2) Giotto
- (3) Masaccio
- (4) Botticelli

Q.56 following sculptors, Whose work represents influence of Mexican primitive From the sculptures?

- (1) August Rodin
- (2) Jean Arp
- (3) Alberto Giacometti
- (4) Henry Moore

Q.57 Identify the German Aestheticians

- (A) Baumgarten
- (B) Giorgio Vasoore
- (C) Croce
- (D) Hegel

Choose the correct answer from the option given below:

- (1) (A) and (B) only
- (2) (A) and (D) only
- (3) (C) and (D) only
- (4) (B) and (C) only

Q.58 Aluminum has been alloyed with copper to

- (A) Cool the alloy
- (B) Resists corrosion
- (C) Lower the melting point
- (D) Harden Physically

Choose the correct answer from the option given below:

- (1) (A) and (B) only
- (2) (C) and (D) only
- (3) (B) and (C) only
- (4) (A) and (D) only

Q.59 Prahlad Kakkar is best known for his following work (ad films)

- (A) Ye hi hai right choice
- (B) Everest ka teekha Lal
- (C) I love you Rasna
- (D) MRF Muscle Man

Choose the correct answer from the option given below:

- (1) (A). (B) and (D) only
- (2) (B). (C) and (D) only
- (3) (D). (A) and (B) only
- (4) (A). (B) and (C) only

Q.60 Eclecticism in art is an attitude that permits

- (A) Illusion
- (B) A free choice
- (C) Decoration
- (D) Combination of styles

Choose the correct answer from the option given below:

- (1) (A) and (B) only
- (2) (B) and (D) only
- (3) (C) and (D) only
- (4) (B) and (C) only

Q.61 Typical metal reliefs of P.V. Janakiram are made by

- (1) Indigenous process
- (2) Lost-wax process
- (3) Sand Cast

(4) Response process

Q.62

Assertion (A): The field of Children's book illustration does not continue any longer to be a rich area to Showcase technical and Stylistic experimentation in drawing
Reasons (R) Artists from around the world have drawn on their own Cultural traditions in their work, which adds pictorial comment to an author's words.
In the light of above statements, choose the most appropriate answer from the option given below.

- (1) Both (A) and (R) are correct and (R) is the correct explanation of (A)
- (2) Both (A) and (R) are correct and (R) is not the correct explanation of (A)
- (3) (A) is correct, but (R) is not correct
- (4) (A) is not correct, but (R) is correct

Q.63 Alyque Padamsee built the brands

- (A) Liril girl in the waterfall
- (B) Cherry Blossom Shoe Polish
- (C) Lalitaji for Surf
- (D) Har Ek Friend Zaroori Hota Hai

Choose the correct answer from the option given below:

- (1) (A), (C) and (D) only
- (2) (B), (C) and (D) only
- (3) (A), (B) and (C) only
- (4) (D), (A) and (B) only

Q.64 Hiroshige was master of

- (1) Wood engraving prints
- (2) Wood cut prints
- (3) Dry-points prints
- (4) Stencil prints

Q.65 'Hex' colours are used when creating design for the

- (1) Internet
- (2) Outdoor Billboards
- (3) Canvas board
- (4) Bonding and Logos

Q.66 Landmark monuments in Fatehpur Sikri are

- (A) Jhulti Minar
- (B) Buland Darwaza
- (C) Hawa Mahal
- (D) Panch Mahal

Choose the correct answer from the option given below:

- (1) (A) and (C) only
- (2) (B) and (C) only
- (3) (B) and (D) only
- (4) (C) and (D) only

Q.67 Who painted, "The calling of St. Mathew"?

- (1) Henri Matisse
- (2) Zurbaran
- (3) Andre Derain
- (4) Caravaggio

Q.68 In Elephanta 'Shiva Mahesamurti' is in

- (1) Limestone
- (2) Granite
- (3) Dark brown sandstone
- (4) Red Sandstone

Q.69 Sculptor Gonzalez used to work with

- (1) Henry Moore
- (2) Henri Matisse
- (3) Pablo Picasso
- (4) Alberto Giacometti

Q.70 Arrange the media of advertising in order of their evolution.

- (A) Newspaper
- (B) Television
- (C) Online
- (D) Outdoor and transit

Choose the correct answer from the option given below:

- (1) (B), (A), (D), (C)
- (2) (A), (B), (C), (D)
- (3) (A), (D), (B), (C)
- (4) (C), (A), (D), (B)

Q.71 Which is the modern design movement that was closed down by

Hitler's government in the early 30's in
20th Century Nationalist

- (1) Bolshevism
- (2) Bauhaus
- (3) Dentscher Werkbund
- (4) The Arts and Crafts movement

Q.72 Following type faces are Sans-Serif
type faces:

- (A) Helvetica
- (B) Baskerville
- (C) Futura
- (D) Times New Roman

Choose the correct answer from the option
given below:

- (1) (A) and (B) only
- (2) (B) and (C) only
- (3) (A) and (C) only
- (4) (C) and (D) only

Q.73 Black Sun' is a work by

- (1) Ernst Barlach
- (2) Constantin Brancusi
- (3) Isamu Naguchi
- (4) Walter Bodmer

Q.74 Given below are two statements:

Statement (I) Kailash Nath temple at
Ellora is monolithic rock cut temple
carved out of a live rocky hill.

Statement (II): Carving of this
architectural grandiose started in reverse
order of construction from top towards
bottom and from back ward to forward.

In the light of the above statements,
choose the correct answer from the options
given below:

- (1) Both Statement (I) and Statement (II)
are true
- (2) Both Statement (I) and Statement (II)
are false
- (3) Statement (I) is correct but Statement
(II) is false

(4) Statement (I) is incorrect but Statement
(II) is true

Q.75 William Blake represents to which
art movement.

- (1) Impressionism (2) Expressionism
- (3) Romanticism (4) Fauvism

Q.76 Mezzotint is done by using

- (A) Squeeze
- (B) Rocker
- (C) Brayer
- (D) Roulette

Choose the correct answer from the option
given below

- (1) (B) and (C) only
- (2) (C) and (D) only
- (3) (A) and (B) only
- (4) (B) and (D) only

Q.77 Given below are two statements:

Statement (I) Beauty is absolutely related
to human instinct of carnal desire.

Statement (II): Because, satisfaction of
human Psyche as a whole, is never
concerned with the phenomenon.

In the light of the above statements,
choose the correct answer from the options
given below:

- (1) Both Statement (I) and Statement (II)
are correct
- (2) Both Statement (I) and Statement (II)
are incorrect
- (3) Statement (I) is correct but Statement
(II) is incorrect
- (4) Statement (I) is incorrect but Statement
(II) is correct

Q.78 Select the correct chronological
sequence of artists.

- (A) Mark Rothko
- (B) Robert Motherwell
- (C) Jackson Pollock
- (D) Andy Warhol

Choose the correct answer from the option given below:

- (1) (A), (B), (C), (D)
- (2) (C), (D), (B), (A)
- (3) (A), (C), (B), (D)
- (4) (D), (B), (A), (C)

Q.79 Arrange the fonts in sequence of their evolution through time

- (A) Franklin Gothic
- (B) Didot
- (C) Garamond
- (D) Baskerville

Choose the correct answer from the option given below:

- (1) (A), (B), (C), (D)
- (2) (C), (D), (B), (A)
- (3) (B), (C), (D), (A)
- (4) (D), (B), (A), (C)

Q.80 Edgar Degas is known as

- (A) Sculptor
- (B) Painter
- (C) Musician
- (D) Dramatist

Choose the correct answer from the option given below:

- (1) (A) and (C) only
- (2) (A) and (D) only
- (3) (B) and (C) only
- (4) (A) and (B) only

Q.81 Following fonts are Serif type faces

- (A) Didot
- (B) Grotesque
- (C) Clarendon
- (D) Georgia

Choose the correct answer from the option given below:

- (1) (A), (B) and (C) only
- (2) (A), (C) and (D) only
- (3) (B), (C) and (D) only
- (4) (A), (B) and (D) only

Q.82 Select the correct Chronological sequence of artists

- (A) Henri Matisse
- (B) Paul Klee
- (C) John Miro
- (D) Georges Braque

Choose the correct answer from the option given below:

- (1) (A), (B), (C), (D)
- (2) (A), (B), (D), (C)
- (3) (A), (C), (D), (B)
- (4) (B), (D), (A), (C)

Q.83 Choose correct chronology of the sculpture of Michelangelo?

- (A) David
- (B) Pieta
- (C) Rondanini Pieta
- (D) Madonna of Stairs

Choose the correct answer from the option given below:

- (1) (A), (B), (C), (D)
- (2) (D), (B), (A), (C)
- (3) (B), (C), (A), (D)
- (4) (C), (A), (B), (D)

Q.84 The essential and permanent aspects of Indian sculptures are

- (A) Accentless distribution
- (B) Dynamic coherence
- (C) Plasticity
- (D) Photo-realism

Choose the correct answer from the option given below:

- (1) (A), (B) and (D) only
- (2) (B), (C) and (D) only
- (3) (A), (B) and (C) only
- (4) (A), (C) and (D) only

Q.85 Size of a newspaper advertisement are conventionally indicated in terms of?

- (1) Column X Centimetre (2) Inch X inch
- (3) Inch X Centimetre (4) Square inch

Q.86 Deepika Padukone is the brands face of

- (A) Vistara Airlines
- (B) Oppo
- (C) Lux
- (D) Jharkhand Tourism

Choose the correct answer from the option given below:

- (1) (B). (C) and (D) only
- (2) (D). (A) and (B) only
- (3) (A). (B) and (C) only
- (4) (B). (C) and (D) only

Q.87 Given below are two statements:

Statement (I): In aquatint print making process, the tonal effect is obtained by use of resin powder.

Statement (II): Because resin powder is not acid-resistant which allows biting the plate.

In the light of the above statements, choose the correct answer from the options given below:

- (1) Both Statement (I) and Statement (II) are true
- (2) Both Statement (I) and Statement (II) are false
- (3) Statement (I) is correct but Statement (II) is false
- (4) Statement (I) is incorrect but Statement (II) is true

Q.88 'Art is a certain kind of Symbol' is a doctrine propagated by

- (1) Aristotle
- (2) Plato
- (3) Roger Fry
- (4) Susanne K. Langer

Q.89 Different type of "Graver" use for:

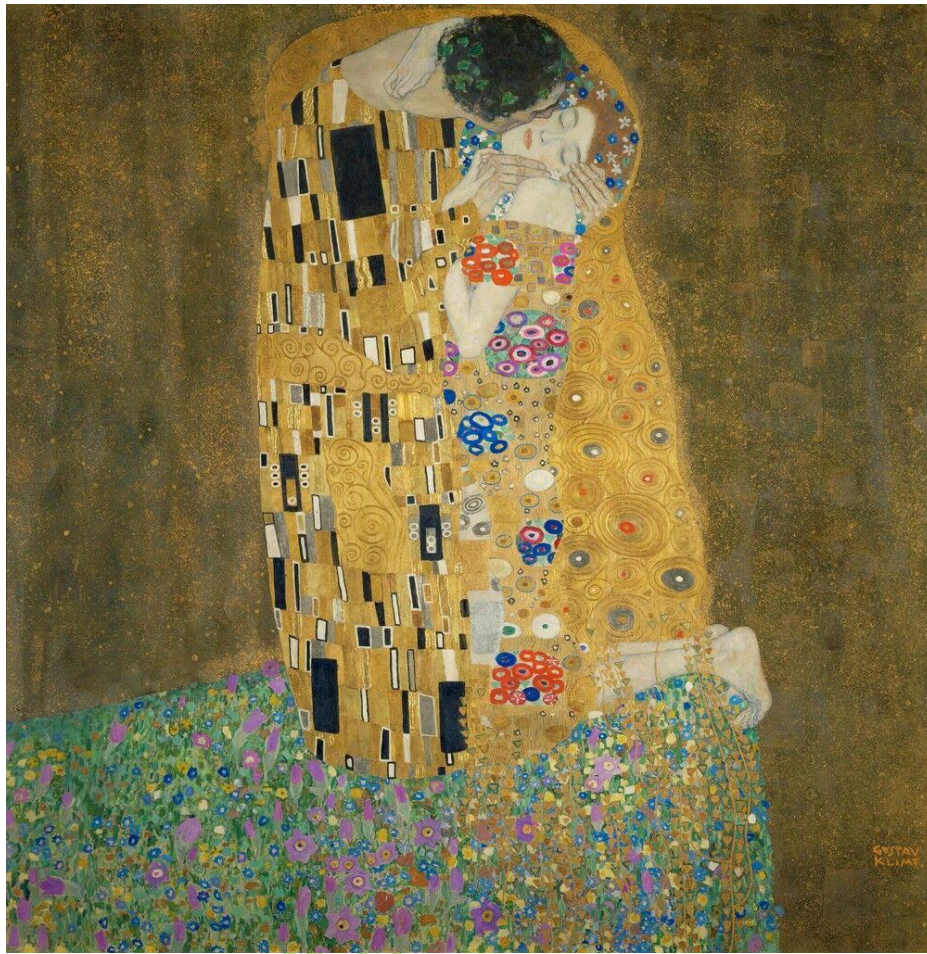
- (1) Grinding
- (2) Engraving
- (3) Mezzotint
- (4) Dry-point

Q.90 Match List I with List II

- | | |
|-----------------------|---------------------|
| (A) Sanatkar | (i) Etching |
| (B) Krishna Reddy | (ii) Lino Cut |
| (C) Mukul Chandra Dey | (iii) Wood intaglio |
| (D) Chittaprasad | (iv) Viscosity |

Choose the correct answer from the options given below:

- (1) (A)-(III). (B)-(IV). (C)-(I). (D)-(II)
- (2) (A) (IV). (B) (I). (C)-(II), (D)-(III)
- (3) (A) (II). (B) (I). (C)-(III). (D) (IV)
- (4) (A) (1). (B) (II). (C)-(IV). (D)-(III)



Question numbers 91 to 95 have been asked from this Painting

Q.91 What is Gustav Klimt Style?

- (1) Art Nouveau (2) Symbolism
- (3) Vienna Secession (4) Cubism

Q.92 Gustav Klimt was influenced by

- (1) Egon Schiele (2) Pablo Picasso
- (3) Albrecht Durer (4) Auguste Rodin

Q.93 What is the title of the Painting?

- (1) Affection (2) The Kiss
- (3) Golden Epoch (4) Love for Emilie

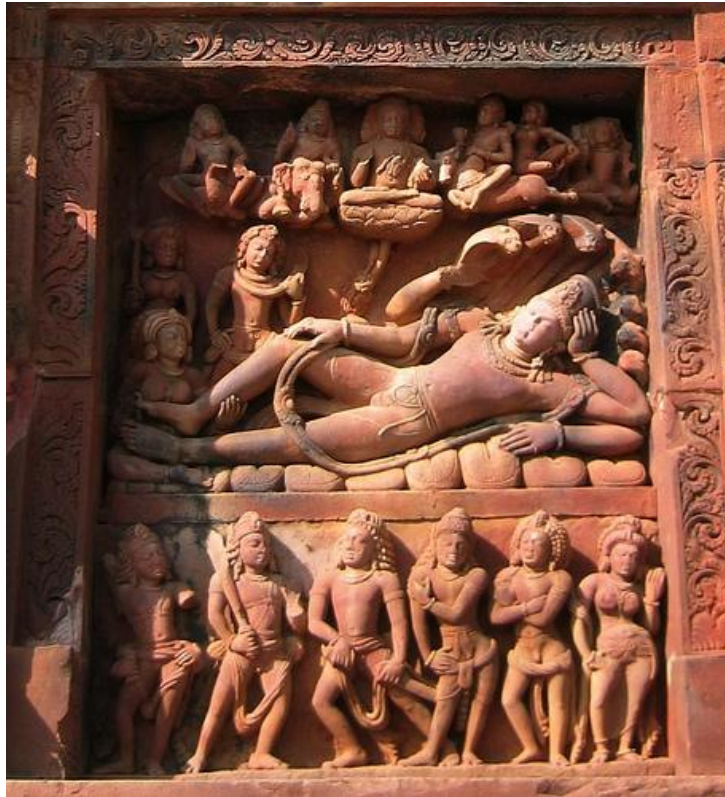
Q.94 What is Gustav Klimt's Nationality?

- (1) Austrian (2) Russian
- (3) Egyptian (4) Latin American

Q.95 What is the Medium of Painting?

- (1) Colour Engraving
- (2) Soft Pastel on paper
- (3) Acrylic on Canvas
- (4) Oil on Canvas

Question numbers 96 to 100 have been asked from this Sculpture.



Q.96 Where is the sculpture located?

- (1) Kailash Temple, Ellora
- (2) Cave 27, Ajanta
- (3) Dashavatar Temple – Deogarh
- (4) Udaigiri - Vidisha

Q.97 Which period of Indian history does this temple belong to

- (1) 325 AD
- (2) 425 AD
- (3) 400 AD
- (4) 376 AD

Q.98 Identify the figures at the Bottom of the Panel

- (1) Pandava and Draupadi
- (2) Vishnu in Human Form
- (3) Attendants of Vishnu
- (4) Ayudhpurushas and Demons

Q.99 What is the architecture style of the temple?

- (1) Nagar
- (2) Dravidian
- (3) Vesar
- (4) Indigenous

Q.100 The Sculpture is known as

- (1) Anant Vasudeva
- (2) Vishnu Anantshayi
- (3) Creation of Universe
- (4) Hiranyagarbha